

*International Society for Neurovascular Diseases, ISNVD*  
*9<sup>th</sup> Annual Meeting, May 30-31, 2019 Ferrara – Italy*

**AULA MAGNA – FRIDAY 31<sup>st</sup>, MAY**

**Session 4. Lunch Session “Young Investigator Award” – 12.20 - 13.25**

Moderators: P. Veroux, Catania; R Zivadinov, Buffalo; Y. Ge, New York

**12.22-12.27 Dejan Jakimovski, Decrease in secondary neck vessels and cerebral aqueduct enlargement in multiple sclerosis: a 5-year longitudinal MRI study**

**Discussant: M. Haacke**

**12.32-12.37 Laura Pelizzari, Cerebral blood flow and cerebrovascular reactivity in Parkinson’s disease: relationship with severity of motor symptoms**

**Discussant: E. Granieri**

**12.42 -12.47 Nicole Ziliotto, Expression profile of haemostasis genes in vascular wall: is internal jugular vein protected from thrombosis in impaired outflow condition?**

**Discussant: D. Gemmati**

**12.52-12.57 Alba Scerrati, The eagle jugular syndrome**

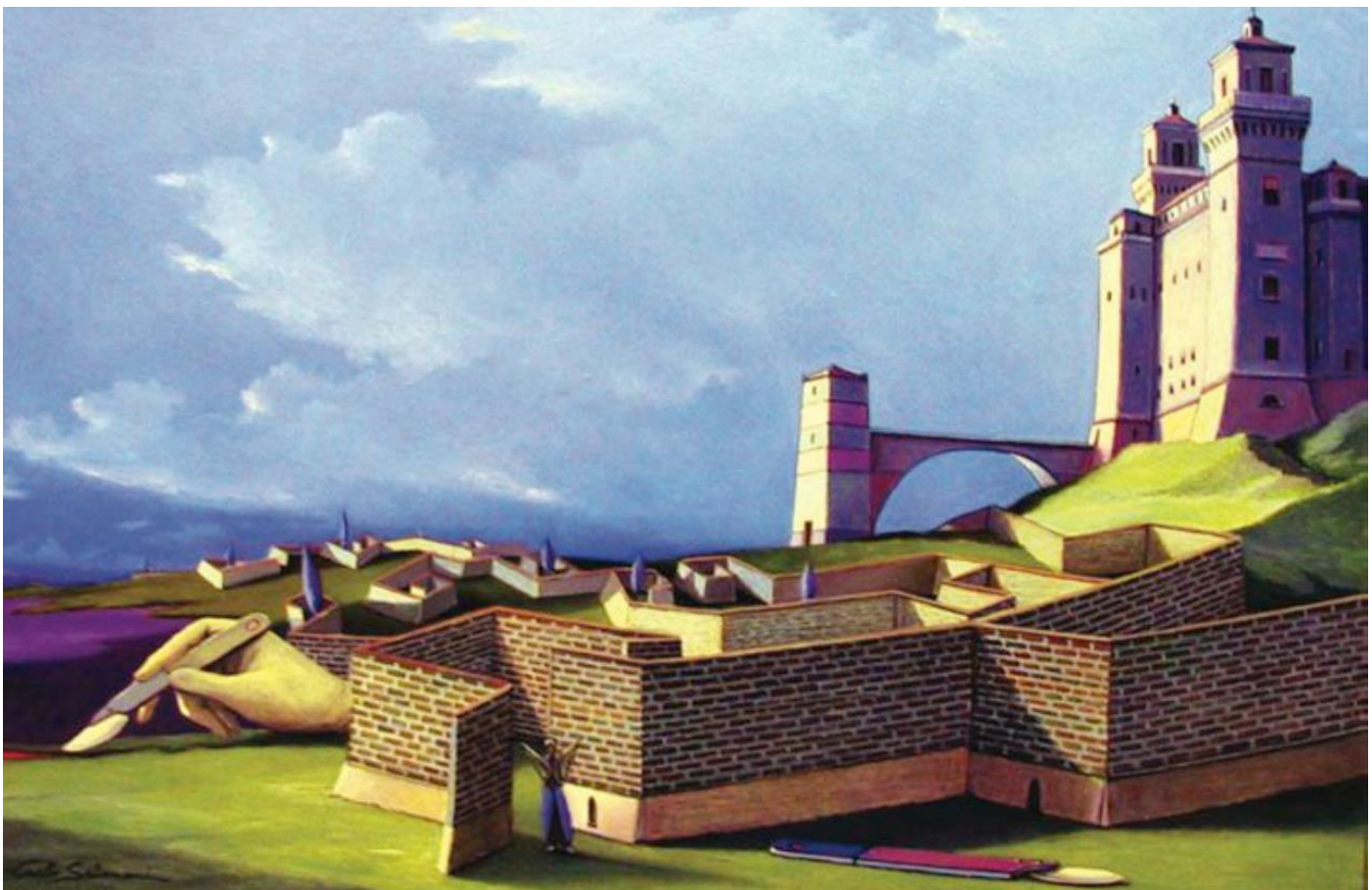
**Discussant: C. Anile**

**13.02 -13.07 Alice Pirastru, Brain perfusion patterns: consistency and similarity with fMRI resting state networks and arterial vascular territories**

**Discussant: M. Wang**

**13.12 -13.17 Augusto Bonilauri, Effects of channel displacements vs. cortical anatomy on fNIRS sensitivity: a simulation study**

**Discussant: F. Manfredini**



**TORQUATO TASSO ROOM – THURSDAY, MAY 30<sup>th</sup>**

**“Short Presentation” Session – 13.35-14.35**

Moderators: AM. Malagoni, Ferrara – Niels Bergsland, Buffalo

**13.37-13.40 Measuring aqueduct of Sylvius cerebrospinal fluid flow in multiple sclerosis using different software packages.**

M. Laganà

**13.41-13.44 Mechanical function of internal jugular vein valve: post analysis of m mode imaging under cardiac monitoring.**

N. Mohammed

**13.45-13.48 Multi-compartment mathematical model for cerebrospinal fluid mechanics coupled to the systemic circulation: application to transverse sinus stenosis.**

L. Muller

**13.49-13.52 Sart 3.5d - recovering cerebrovascular hemodynamics from standard 3d digital subtraction angiography cone-beam CT data-sets.**

S. El Hadji

**13.53-13.56 Hyper-simplified cerebrovascular model: high sensitivity of venous pulsatility vs. Venous resistance.**

G. Baselli

**13.57-14.00 Microembolic events during carotid stenting and surgery.**

A. Di Girolamo

**14.01-14.04 The role of omohyoid muscle entrapment of the internal jugular vein and its surgical transection in Ménière's disease and other inner ear disorders.**

G.N. Frau

**14.05-14.08 The intra and extra cranial veins in relationship with chronic migraine.**

G. Toma

**14.09-14.12 Assessment of vascular plasticity in stroke recovery: a NIRS-based metabolic approach.**

N. Lamberti

**14.13-14.16 Infected Gore<sup>®</sup> VIABHAN<sup>®</sup> endoprosthesis with carotid-cutaneous fistula: a rare complication after endovascular procedure on the carotid artery.**

V. Catanese

**14.17-14.20 Fluid dynamics of venous flow in multiple sclerosis.**

T. Tucker

**14.21-14.35 Discussion**